

VETERINARY SAM[®] SPLINT

Stronger and more durable for animals

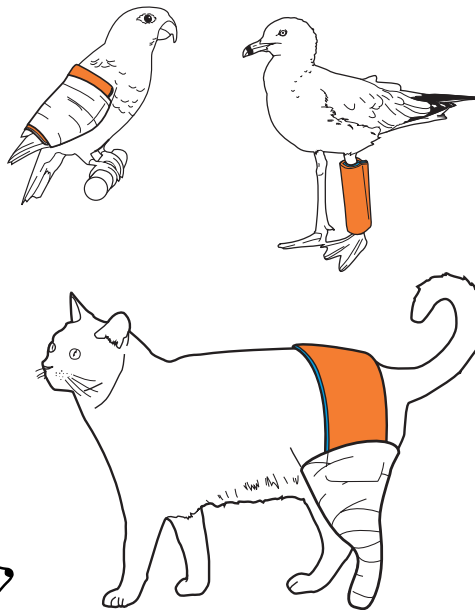


The **SAM[®] SPLINT** is based on an ancient construction principle: curves are strong. The **SAM[®] SPLINT** is built from a thin core of aluminum alloy, sandwiched between two layers of closed-cell foam. The splint is exceptionally pliable. Bent into any of three simple curves, it becomes extremely strong and supportive for any fractured or injured limb.

The **VETERINARY SAM[®] SPLINT** has been carefully evaluated and improved to meet the unique requirements of veterinary medicine.

FEATURES AND BENEFITS

- Twice as thick as the regular SAM[®] Splint
- Reusable
- Lightweight and compact
- Radiolucent
- Fastens in place with tape or wrap of choice; no extra equipment is needed
- Not affected by extreme temperatures or altitudes; even works underwater
- Closed-cell foam allows easy cleaning and disinfection; material compatible with all standard cleaning solutions
- Can be rolled or folded for easy storage in kits

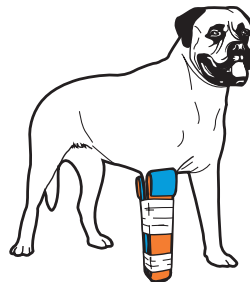
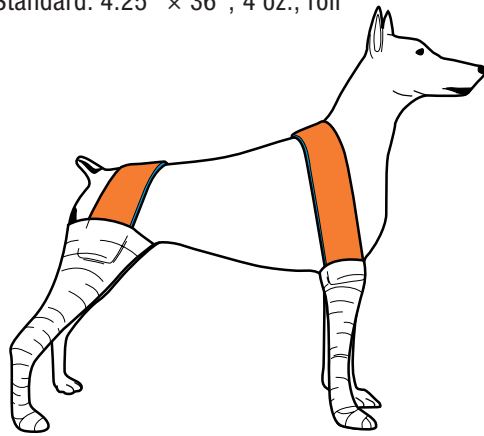


POSSIBLE APPLICATIONS

- Carpal and tarsal fractures
- Metacarpal and metatarsal fractures
- Post-surgical support for IM pinning or plating of the radius, ulna, tibia or fibula
- Greenstick and fissure fractures
- Distal tibia and fibula fractures in small dogs and cats
- Post-reduction luxated tibial tarsal joint
- Emergency immobilization of humeral and femoral
- Fractures while awaiting surgical treatment
- Post-tendon repair
- Chewing restraints
- Post-surgical ear crop support racks
- Avian fractures

TECHNICAL DATA

- Standard: 4.25" x 36"; 4 oz.; roll



CE APPROVED
ISO 13485:2003

ORDERING INFO

Part Number	Description	Case Size
SP3003	SAM [®] Vet Splint 36" Roll Orange Blue	60/case



SAM MEDICAL
PRODUCTS[®]

customerservice@sammedical.com
P.O. Box 3270 Tualatin, OR 97062
800.818.4726 | 503.639.5474
www.sammedical.com



Rev. # Spl-502-vetfs-1